



Full wwPDB X-ray Structure Validation Report ⓘ

Mar 20, 2026 – 03:01 AM UTC

PDB ID : 1GPU / pdb_00001gpu
Title : Transketolase complex with reaction intermediate
Authors : Fiedler, E.; Thorell, S.; Sandalova, T.; Koenig, S.; Schneider, G.
Deposited on : 2001-11-09
Resolution : 1.86 Å(reported)

This is a Full wwPDB X-ray Structure Validation Report for a publicly released PDB entry.

We welcome your comments at validation@mail.wwpdb.org

A user guide is available at

<https://www.wwpdb.org/validation/2017/XrayValidationReportHelp>

with specific help available everywhere you see the ⓘ symbol.

The types of validation reports are described at

<http://www.wwpdb.org/validation/2017/FAQs#types>.

The following versions of software and data (see [references ⓘ](#)) were used in the production of this report:

MolProbity : 4-5-2 with Phenix2.0
Mogul : 2022.3.0, CSD as543be (2022)
Xtriage (Phenix) : 2.0
EDS : 3.0
Buster-report : wwPDB partial adaption of 1.1.7 (2018)
Percentile statistics : 20250101.v01 (using entries in the PDB archive January 1st 2025)
CCP4 : 9.0.010 (Gargrove)
Density-Fitness : 1.0.12
Ideal geometry (proteins) : Engh & Huber (2001)
Ideal geometry (DNA, RNA) : Parkinson et al. (1996)
Validation Pipeline (wwPDB-VP) : 2.49

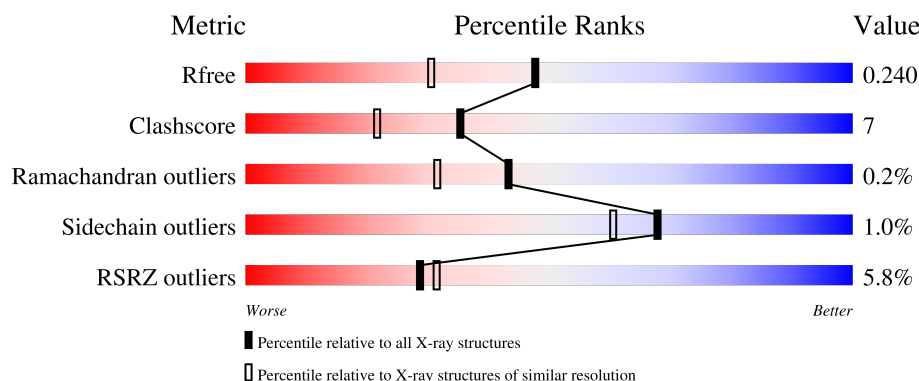
1 Overall quality at a glance

The following experimental techniques were used to determine the structure:

X-RAY DIFFRACTION

The reported resolution of this entry is 1.86 Å.

Percentile scores (ranging between 0-100) for global validation metrics of the entry are shown in the following graphic. The table shows the number of entries on which the scores are based.



Metric	Whole archive (#Entries)	Similar resolution (#Entries, resolution range(Å))
R_{free}	180053	3428 (1.86-1.86)
Clashscore	190562	3579 (1.86-1.86)
Ramachandran outliers	187476	3553 (1.86-1.86)
Sidechain outliers	187428	3553 (1.86-1.86)
RSRZ outliers	180081	3429 (1.86-1.86)

The table below summarises the geometric issues observed across the polymeric chains and their fit to the electron density. The red, orange, yellow and green segments of the lower bar indicate the fraction of residues that contain outliers for ≥ 3 , 2, 1 and 0 types of geometric quality criteria respectively. A grey segment represents the fraction of residues that are not modelled. The numeric value for each fraction is indicated below the corresponding segment, with a dot representing fractions $\leq 5\%$. The upper red bar (where present) indicates the fraction of residues that have poor fit to the electron density. The numeric value is given above the bar.

Mol	Chain	Length	Quality of chain
1	A	680	<div> <div>7%</div> <div>84%</div> <div>14%</div> <div>.</div> </div>
1	B	680	<div> <div>5%</div> <div>83%</div> <div>15%</div> <div>.</div> </div>

The following table lists non-polymeric compounds, carbohydrate monomers and non-standard residues in protein, DNA, RNA chains that are outliers for geometric or electron-density-fit criteria:

Mol	Type	Chain	Res	Chirality	Geometry	Clashes	Electron density
2	CA	B	1681	-	-	-	X

2 Entry composition [i](#)

There are 4 unique types of molecules in this entry. The entry contains 11315 atoms, of which 0 are hydrogens and 0 are deuteriums.

In the tables below, the ZeroOcc column contains the number of atoms modelled with zero occupancy, the AltConf column contains the number of residues with at least one atom in alternate conformation and the Trace column contains the number of residues modelled with at most 2 atoms.

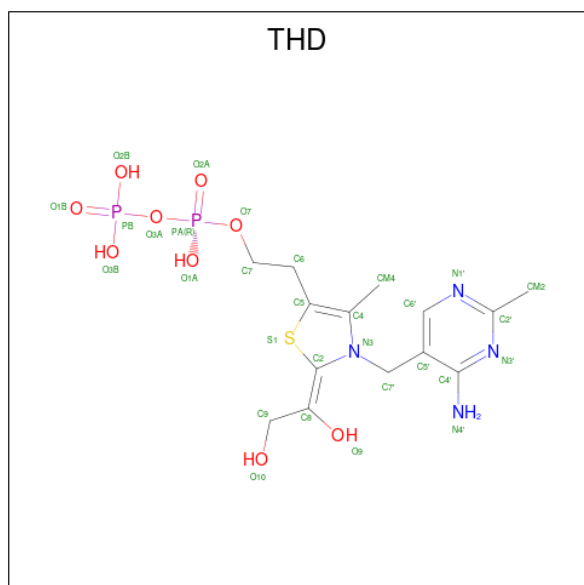
- Molecule 1 is a protein called TRANSKETOLASE 1.

Mol	Chain	Residues	Atoms					ZeroOcc	AltConf	Trace
1	A	678	Total	C	N	O	S	0	0	0
			5197	3312	884	989	12			
1	B	678	Total	C	N	O	S	0	0	0
			5197	3312	884	989	12			

- Molecule 2 is CALCIUM ION (CCD ID: CA) (formula: Ca).

Mol	Chain	Residues	Atoms		ZeroOcc	AltConf
2	A	1	Total	Ca	0	0
			1	1		
2	B	1	Total	Ca	0	0
			1	1		

- Molecule 3 is 2-[3-[(4-AMINO-2-METHYL-5-PYRIMIDINYL)METHYL]-2-(1,2-DIHYDROXYETHYL)-4-METHYL-1,3-THIAZOL-3-IUM-5-YL]ETHYL TRIHYDROGEN DIPHOSPHATE (CCD ID: THD) (formula: C₁₄H₂₂N₄O₉P₂S).



Mol	Chain	Residues	Atoms						ZeroOcc	AltConf
3	A	1	Total 30	C 14	N 4	O 9	P 2	S 1	0	0
3	B	1	Total 30	C 14	N 4	O 9	P 2	S 1	0	0

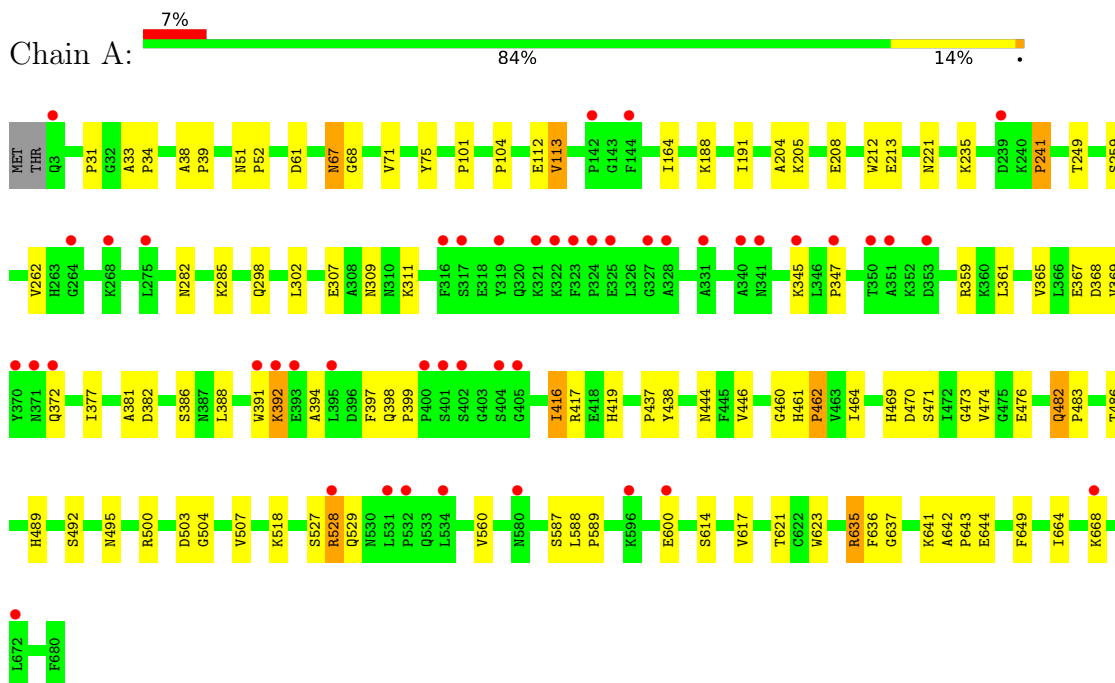
- Molecule 4 is water.

Mol	Chain	Residues	Atoms		ZeroOcc	AltConf
4	A	405	Total	O	0	0
			405	405		
4	B	454	Total	O	0	0
			454	454		

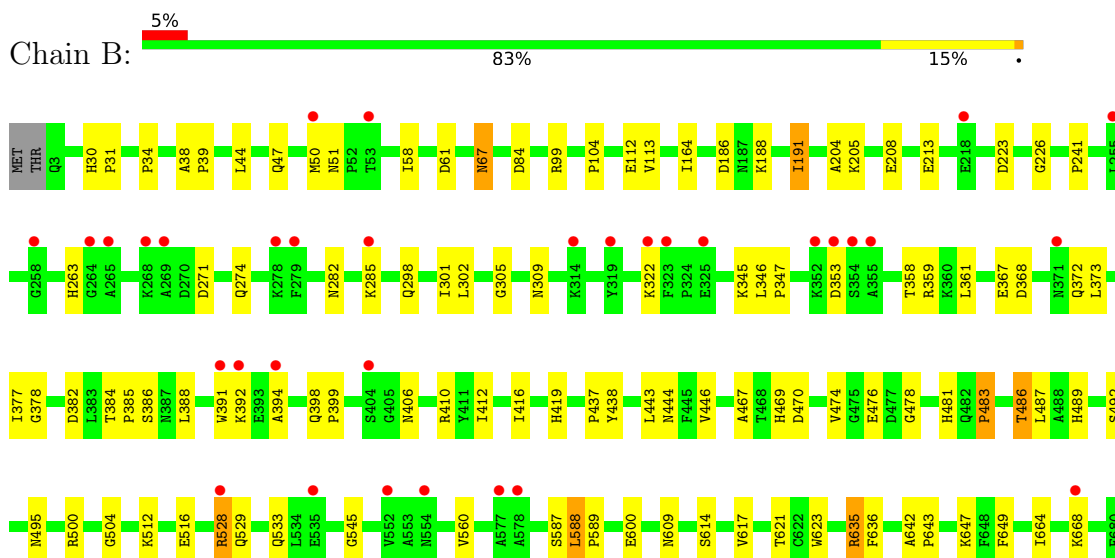
3 Residue-property plots

These plots are drawn for all protein, RNA, DNA and oligosaccharide chains in the entry. The first graphic for a chain summarises the proportions of the various outlier classes displayed in the second graphic. The second graphic shows the sequence view annotated by issues in geometry and electron density. Residues are color-coded according to the number of geometric quality criteria for which they contain at least one outlier: green = 0, yellow = 1, orange = 2 and red = 3 or more. A red dot above a residue indicates a poor fit to the electron density ($RSRZ > 2$). Stretches of 2 or more consecutive residues without any outlier are shown as a green connector. Residues present in the sample, but not in the model, are shown in grey.

• Molecule 1: TRANSKETOLASE 1



• Molecule 1: TRANSKETOLASE 1



4 Data and refinement statistics

Property	Value	Source
Space group	P 21 21 21	Depositor
Cell constants a, b, c, α , β , γ	74.30Å 113.20Å 159.40Å 90.00° 90.00° 90.00°	Depositor
Resolution (Å)	30.00 – 1.86 30.00 – 1.86	Depositor EDS
% Data completeness (in resolution range)	92.8 (30.00-1.86) 92.2 (30.00-1.86)	Depositor EDS
R_{merge}	0.05	Depositor
R_{sym}	(Not available)	Depositor
$\langle I/\sigma(I) \rangle$ ¹	3.06 (at 1.86Å)	Xtriage
Refinement program	CNS 1.0	Depositor
R, R_{free}	0.198 , 0.225 0.216 , 0.240	Depositor DCC
R_{free} test set	5204 reflections (4.99%)	wwPDB-VP
Wilson B-factor (Å ²)	18.0	Xtriage
Anisotropy	0.841	Xtriage
Bulk solvent k_{sol} (e/Å ³), B_{sol} (Å ²)	0.42 , 60.0	EDS
L-test for twinning ²	$\langle L \rangle = 0.49$, $\langle L^2 \rangle = 0.32$	Xtriage
Estimated twinning fraction	No twinning to report.	Xtriage
F_o, F_c correlation	0.94	EDS
Total number of atoms	11315	wwPDB-VP
Average B, all atoms (Å ²)	21.0	wwPDB-VP

Xtriage's analysis on translational NCS is as follows: *The largest off-origin peak in the Patterson function is 3.78% of the height of the origin peak. No significant pseudotranslation is detected.*

¹Intensities estimated from amplitudes.

²Theoretical values of $\langle |L| \rangle$, $\langle L^2 \rangle$ for acentric reflections are 0.5, 0.333 respectively for untwinned datasets, and 0.375, 0.2 for perfectly twinned datasets.

5 Model quality

5.1 Standard geometry

Bond lengths and bond angles in the following residue types are not validated in this section: THD, CA

The Z score for a bond length (or angle) is the number of standard deviations the observed value is removed from the expected value. A bond length (or angle) with $|Z| > 5$ is considered an outlier worth inspection. RMSZ is the root-mean-square of all Z scores of the bond lengths (or angles).

Mol	Chain	Bond lengths		Bond angles	
		RMSZ	$\# Z > 5$	RMSZ	$\# Z > 5$
1	A	0.36	0/5323	0.91	21/7230 (0.3%)
1	B	0.36	0/5323	0.90	18/7230 (0.2%)
All	All	0.36	0/10646	0.91	39/14460 (0.3%)

There are no bond length outliers.

All (39) bond angle outliers are listed below:

Mol	Chain	Res	Type	Atoms	Z	Observed(°)	Ideal(°)
1	A	61	ASP	N-CA-C	-8.13	99.03	110.50
1	B	61	ASP	N-CA-C	-8.02	99.19	110.50
1	A	476	GLU	N-CA-C	7.76	120.72	111.33
1	B	476	GLU	N-CA-C	7.55	120.46	111.33
1	B	446	VAL	N-CA-C	-6.94	102.37	111.05
1	A	446	VAL	N-CA-C	-6.75	102.65	111.09
1	B	486	THR	N-CA-C	6.64	119.08	111.11
1	A	486	THR	N-CA-C	6.48	118.88	111.11
1	B	470	ASP	N-CA-C	6.40	120.92	113.18
1	A	461	HIS	CA-C-N	6.21	127.61	119.84
1	A	461	HIS	C-N-CA	6.21	127.61	119.84
1	A	500	ARG	CA-C-N	6.17	126.49	119.83
1	A	500	ARG	C-N-CA	6.17	126.49	119.83
1	A	470	ASP	N-CA-C	6.06	120.53	113.20
1	B	399	PRO	N-CA-C	-6.03	104.13	110.58
1	A	495	ASN	N-CA-C	5.60	119.36	111.52
1	B	495	ASN	N-CA-C	5.57	119.31	111.52
1	B	241	PRO	N-CA-C	-5.54	102.57	111.38
1	B	191	ILE	N-CA-C	5.44	116.17	110.62
1	A	399	PRO	N-CA-C	-5.43	104.77	110.58
1	B	623	TRP	N-CA-C	5.41	119.72	113.18
1	B	478	GLY	CA-C-N	5.37	125.69	119.47

Continued on next page...

Continued from previous page...

Mol	Chain	Res	Type	Atoms	Z	Observed(°)	Ideal(°)
1	B	478	GLY	C-N-CA	5.37	125.69	119.47
1	B	609	ASN	N-CA-C	5.31	119.04	112.24
1	A	623	TRP	N-CA-C	5.28	119.57	113.18
1	B	58	ILE	N-CA-C	5.16	117.49	111.05
1	B	412	ILE	N-CA-C	5.14	115.71	108.36
1	A	68	GLY	N-CA-C	5.14	120.10	113.27
1	A	588	LEU	CA-C-N	5.13	125.17	119.32
1	A	588	LEU	C-N-CA	5.13	125.17	119.32
1	A	392	LYS	N-CA-C	5.13	119.79	111.37
1	A	241	PRO	N-CA-C	-5.11	103.26	111.38
1	A	188	LYS	N-CA-C	5.10	118.63	111.90
1	B	213	GLU	N-CA-C	-5.09	101.40	109.96
1	A	213	GLU	N-CA-C	-5.04	101.49	109.96
1	B	588	LEU	CA-C-N	5.03	125.05	119.32
1	B	588	LEU	C-N-CA	5.03	125.05	119.32
1	A	482	GLN	CA-C-N	5.01	124.92	119.76
1	A	482	GLN	C-N-CA	5.01	124.92	119.76

There are no chirality outliers.

There are no planarity outliers.

5.2 Too-close contacts ⓘ

In the following table, the Non-H and H(model) columns list the number of non-hydrogen atoms and hydrogen atoms in the chain respectively. The H(added) column lists the number of hydrogen atoms added and optimized by MolProbity. The Clashes column lists the number of clashes within the asymmetric unit, whereas Symm-Clashes lists symmetry-related clashes.

Mol	Chain	Non-H	H(model)	H(added)	Clashes	Symm-Clashes
1	A	5197	0	5139	82	0
1	B	5197	0	5139	75	0
2	A	1	0	0	0	0
2	B	1	0	0	0	0
3	A	30	0	18	2	0
3	B	30	0	18	2	0
4	A	405	0	0	10	0
4	B	454	0	0	3	0
All	All	11315	0	10314	153	0

The all-atom clashscore is defined as the number of clashes found per 1000 atoms (including hydrogen atoms). The all-atom clashscore for this structure is 7.

All (153) close contacts within the same asymmetric unit are listed below, sorted by their clash magnitude.

Atom-1	Atom-2	Interatomic distance (Å)	Clash overlap (Å)
1:A:67:ASN:H	1:A:67:ASN:HD22	1.02	0.93
1:A:473:GLY:HA3	1:A:528:ARG:NH1	1.83	0.92
1:B:67:ASN:HD22	1:B:67:ASN:H	1.06	0.92
1:A:474:VAL:HG23	1:A:528:ARG:HH21	1.34	0.91
1:A:473:GLY:HA3	1:A:528:ARG:HH12	1.40	0.82
1:A:67:ASN:HD22	1:A:67:ASN:N	1.74	0.82
1:A:221:ASN:HD21	1:A:249:THR:H	1.28	0.81
1:B:67:ASN:H	1:B:67:ASN:ND2	1.80	0.79
1:A:67:ASN:H	1:A:67:ASN:ND2	1.76	0.78
1:B:67:ASN:HD22	1:B:67:ASN:N	1.80	0.74
1:A:600:GLU:HG3	4:A:2349:HOH:O	1.88	0.73
1:A:473:GLY:C	1:A:528:ARG:CZ	2.63	0.72
1:A:381:ALA:HB1	4:A:2260:HOH:O	1.89	0.71
1:A:473:GLY:CA	1:A:528:ARG:NH1	2.52	0.71
1:A:51:ASN:HD22	1:A:309:ASN:HD22	1.39	0.70
1:A:528:ARG:HD2	1:A:528:ARG:H	1.55	0.69
1:B:474:VAL:O	1:B:528:ARG:NH1	2.27	0.68
1:B:84:ASP:O	1:B:99:ARG:NH2	2.26	0.67
1:A:635:ARG:HD3	1:A:636:PHE:O	1.95	0.65
3:A:1682:THD:C8	3:A:1682:THD:H4'2	2.09	0.65
1:B:635:ARG:HD3	1:B:636:PHE:O	1.97	0.64
1:A:474:VAL:N	1:A:528:ARG:NH2	2.46	0.64
1:B:367:GLU:OE2	1:B:392:LYS:HB2	1.99	0.63
1:A:416:ILE:HA	4:A:2245:HOH:O	1.97	0.63
1:A:416:ILE:N	1:A:416:ILE:HD12	2.14	0.62
3:B:1682:THD:C8	3:B:1682:THD:H4'2	2.12	0.62
1:A:474:VAL:N	1:A:528:ARG:CZ	2.63	0.61
1:A:205:LYS:O	1:B:205:LYS:HE3	2.00	0.61
1:A:416:ILE:HD12	1:A:416:ILE:H	1.66	0.61
1:A:474:VAL:HG23	1:A:528:ARG:NH2	2.11	0.60
1:B:51:ASN:HD22	1:B:309:ASN:HD22	1.50	0.60
1:A:527:SER:HA	4:A:2291:HOH:O	2.02	0.59
1:A:359:ARG:HD2	1:A:386:SER:O	2.03	0.59
1:A:361:LEU:HD13	1:A:504:GLY:HA2	1.86	0.57
1:B:528:ARG:HG2	1:B:528:ARG:O	2.02	0.57
1:A:528:ARG:NH1	1:A:529:GLN:OE1	2.37	0.57
1:B:416:ILE:HD12	1:B:416:ILE:H	1.70	0.57
1:B:416:ILE:HD12	1:B:416:ILE:N	2.20	0.57
1:A:367:GLU:OE2	1:A:392:LYS:HB2	2.06	0.56
3:A:1682:THD:H7'2	3:A:1682:THD:O9	2.06	0.56

Continued on next page...

Continued from previous page...

Atom-1	Atom-2	Interatomic distance (Å)	Clash overlap (Å)
1:A:473:GLY:C	1:A:528:ARG:NH1	2.64	0.56
1:A:528:ARG:NH1	4:A:2291:HOH:O	2.39	0.56
1:B:359:ARG:HG2	1:B:388:LEU:HD12	1.87	0.55
1:A:621:THR:HG21	1:B:492:SER:HA	1.87	0.55
1:A:298:GLN:NE2	1:A:302:LEU:HD23	2.21	0.55
1:B:359:ARG:HD2	1:B:386:SER:O	2.07	0.55
1:B:469:HIS:HB3	1:B:474:VAL:HG22	1.87	0.55
1:A:492:SER:HA	1:B:621:THR:HG21	1.87	0.55
1:A:282:ASN:CB	1:A:285:LYS:HE2	2.38	0.54
1:B:347:PRO:HG3	1:B:368:ASP:OD2	2.07	0.54
1:A:642:ALA:HB3	1:A:643:PRO:HD3	1.90	0.54
3:B:1682:THD:O9	3:B:1682:THD:H7'2	2.08	0.53
1:A:635:ARG:HD2	1:A:649:PHE:CE1	2.43	0.53
1:B:474:VAL:C	1:B:528:ARG:HH12	2.16	0.53
1:A:164:ILE:HD12	1:A:419:HIS:CD2	2.43	0.53
1:B:345:LYS:HD3	1:B:372:GLN:HB2	1.89	0.53
1:B:186:ASP:CG	1:B:188:LYS:HZ2	2.16	0.53
1:A:471:SER:O	1:A:528:ARG:NH2	2.41	0.53
1:B:642:ALA:HB3	1:B:643:PRO:HD3	1.91	0.52
1:B:282:ASN:CB	1:B:285:LYS:HE2	2.38	0.52
1:A:469:HIS:HB3	1:A:474:VAL:HG22	1.90	0.52
1:A:587:SER:C	1:A:589:PRO:HD3	2.35	0.52
1:A:282:ASN:HB3	1:A:285:LYS:HE2	1.92	0.52
1:B:635:ARG:HD2	1:B:649:PHE:CE1	2.44	0.52
1:A:528:ARG:HG3	4:A:2288:HOH:O	2.09	0.52
1:A:641:LYS:HD2	1:A:644:GLU:OE2	2.10	0.52
1:B:50:MET:HE3	1:B:301:ILE:CG2	2.39	0.52
1:B:282:ASN:HB3	1:B:285:LYS:HE2	1.91	0.52
1:B:298:GLN:NE2	1:B:302:LEU:HD23	2.25	0.51
1:B:587:SER:C	1:B:589:PRO:HD3	2.35	0.51
1:B:512:LYS:O	1:B:516:GLU:HG3	2.11	0.51
1:A:259:SER:O	1:A:262:VAL:HG22	2.10	0.50
1:B:635:ARG:HD2	1:B:649:PHE:HE1	1.76	0.50
1:A:359:ARG:HG2	1:A:388:LEU:HD12	1.94	0.50
1:B:664:ILE:O	1:B:668:LYS:HG2	2.12	0.50
1:A:71:VAL:HG23	1:A:104:PRO:HG3	1.94	0.50
1:A:345:LYS:HD3	1:A:372:GLN:HB2	1.93	0.49
1:A:635:ARG:CD	1:A:636:PHE:O	2.60	0.49
1:B:545:GLY:O	1:B:589:PRO:HD2	2.12	0.49
1:A:635:ARG:HD2	1:A:649:PHE:HE1	1.78	0.49
1:B:223:ASP:OD2	1:B:226:GLY:HA3	2.12	0.49

Continued on next page...

Continued from previous page...

Atom-1	Atom-2	Interatomic distance (Å)	Clash overlap (Å)
1:B:487:LEU:HD11	1:B:500:ARG:HD2	1.93	0.49
1:A:528:ARG:CZ	4:A:2291:HOH:O	2.61	0.48
1:B:378:GLY:HA3	1:B:438:TYR:CZ	2.49	0.48
1:A:474:VAL:CG2	1:A:528:ARG:HH21	2.17	0.48
1:A:51:ASN:HD22	1:A:309:ASN:ND2	2.10	0.47
1:B:112:GLU:O	1:B:113:VAL:HG13	2.14	0.47
1:A:347:PRO:HG3	1:A:368:ASP:OD2	2.14	0.47
1:B:600:GLU:HG3	4:B:2396:HOH:O	2.13	0.47
1:A:444:ASN:HB2	1:A:483:PRO:HG3	1.96	0.47
1:A:112:GLU:O	1:A:113:VAL:HG13	2.15	0.47
1:B:444:ASN:HB2	1:B:483:PRO:HG3	1.97	0.47
1:A:75:TYR:OH	1:A:101:PRO:HD2	2.14	0.46
1:A:460:GLY:O	1:A:462:PRO:HD3	2.15	0.46
1:B:361:LEU:HD13	1:B:504:GLY:HA2	1.97	0.46
1:B:643:PRO:O	1:B:647:LYS:HG3	2.16	0.46
1:A:38:ALA:HB3	1:A:39:PRO:HD3	1.97	0.46
1:A:208:GLU:HB2	1:B:205:LYS:HE2	1.97	0.46
1:B:353:ASP:HB2	1:B:533:GLN:HG3	1.99	0.45
1:B:474:VAL:HA	1:B:528:ARG:CZ	2.46	0.45
1:B:635:ARG:CD	1:B:636:PHE:O	2.63	0.45
1:B:50:MET:HE3	1:B:301:ILE:HG23	1.99	0.45
1:A:298:GLN:HE22	1:A:302:LEU:HD23	1.80	0.45
1:B:345:LYS:HD2	1:B:372:GLN:OE1	2.17	0.44
1:B:489:HIS:CD2	1:B:489:HIS:C	2.93	0.44
1:B:164:ILE:HD12	1:B:419:HIS:CD2	2.53	0.44
1:A:205:LYS:NZ	1:B:205:LYS:HG3	2.33	0.44
1:A:664:ILE:O	1:A:668:LYS:HG2	2.17	0.44
1:A:416:ILE:HG13	4:A:2245:HOH:O	2.17	0.44
1:A:417:ARG:N	4:A:2260:HOH:O	2.50	0.44
1:A:489:HIS:C	1:A:489:HIS:CD2	2.95	0.44
1:B:377:ILE:O	1:B:437:PRO:HA	2.18	0.44
1:A:52:PRO:HB2	1:A:302:LEU:HD13	1.99	0.43
1:A:235:LYS:HA	4:A:2133:HOH:O	2.17	0.43
1:B:38:ALA:HB3	1:B:39:PRO:HD3	2.00	0.43
1:B:391:TRP:CD1	1:B:394:ALA:HB2	2.52	0.43
1:A:205:LYS:HE3	1:B:205:LYS:O	2.17	0.43
1:A:377:ILE:O	1:A:437:PRO:HA	2.18	0.43
1:B:44:LEU:HD12	1:B:47:GLN:HE21	1.83	0.43
1:B:373:LEU:O	1:B:410:ARG:NH2	2.52	0.43
1:A:462:PRO:HG3	1:A:518:LYS:C	2.44	0.43
1:A:382:ASP:O	1:B:191:ILE:HB	2.18	0.43

Continued on next page...

Continued from previous page...

Atom-1	Atom-2	Interatomic distance (Å)	Clash overlap (Å)
1:B:204:ALA:O	1:B:208:GLU:HG3	2.19	0.43
1:A:307:GLU:O	1:A:311:LYS:HG3	2.19	0.42
1:B:104:PRO:HB2	4:B:2110:HOH:O	2.19	0.42
1:A:391:TRP:CD1	1:A:394:ALA:HB2	2.54	0.42
1:B:31:PRO:C	1:B:34:PRO:HD2	2.45	0.42
1:B:398:GLN:O	1:B:406:ASN:HA	2.20	0.42
1:A:482:GLN:OE1	1:A:637:GLY:HA3	2.19	0.42
1:B:322:LYS:HE3	1:B:322:LYS:HB3	1.82	0.42
1:B:474:VAL:HA	1:B:528:ARG:NH2	2.34	0.42
1:A:212:TRP:CG	1:A:241:PRO:HG2	2.55	0.42
1:A:31:PRO:C	1:A:34:PRO:HD2	2.45	0.42
1:A:438:TYR:HA	1:A:464:ILE:O	2.20	0.42
1:A:191:ILE:HB	1:B:382:ASP:O	2.20	0.41
1:A:204:ALA:O	1:A:208:GLU:HG3	2.20	0.41
1:B:481:HIS:O	1:B:483:PRO:HD3	2.20	0.41
1:B:346:LEU:HA	1:B:347:PRO:HD3	1.94	0.41
1:A:503:ASP:O	1:A:507:VAL:HG23	2.21	0.41
1:B:50:MET:HE3	1:B:301:ILE:HG21	2.02	0.41
1:B:271:ASP:O	1:B:274:GLN:HG3	2.20	0.41
1:A:560:VAL:O	1:A:614:SER:HA	2.21	0.41
1:B:358:THR:HA	1:B:361:LEU:HD12	2.02	0.41
1:B:50:MET:O	1:B:305:GLY:HA3	2.21	0.41
1:B:529:GLN:HG3	4:B:2360:HOH:O	2.21	0.41
1:B:560:VAL:O	1:B:614:SER:HA	2.21	0.41
1:B:384:THR:N	1:B:385:PRO:HD2	2.35	0.41
1:A:397:PHE:C	1:A:398:GLN:HG2	2.46	0.40
1:B:30:HIS:HB3	1:B:263:HIS:O	2.21	0.40
1:A:33:ALA:N	1:A:34:PRO:CD	2.84	0.40
1:B:443:LEU:HA	1:B:467:ALA:HB1	2.03	0.40
1:A:365:VAL:O	1:A:369:VAL:HG22	2.21	0.40
1:B:44:LEU:HD12	1:B:47:GLN:NE2	2.37	0.40

There are no symmetry-related clashes.

5.3 Torsion angles [i](#)

5.3.1 Protein backbone [i](#)

In the following table, the Percentiles column shows the percent Ramachandran outliers of the chain as a percentile score with respect to all X-ray entries followed by that with respect to entries of similar resolution.

The Analysed column shows the number of residues for which the backbone conformation was analysed, and the total number of residues.

Mol	Chain	Analysed	Favoured	Allowed	Outliers	Percentiles	
1	A	676/680 (99%)	654 (97%)	20 (3%)	2 (0%)	36	25
1	B	676/680 (99%)	654 (97%)	21 (3%)	1 (0%)	48	35
All	All	1352/1360 (99%)	1308 (97%)	41 (3%)	3 (0%)	43	31

All (3) Ramachandran outliers are listed below:

Mol	Chain	Res	Type
1	A	617	VAL
1	B	617	VAL
1	A	462	PRO

5.3.2 Protein sidechains ⓘ

In the following table, the Percentiles column shows the percent sidechain outliers of the chain as a percentile score with respect to all X-ray entries followed by that with respect to entries of similar resolution.

The Analysed column shows the number of residues for which the sidechain conformation was analysed, and the total number of residues.

Mol	Chain	Analysed	Rotameric	Outliers	Percentiles	
1	A	552/554 (100%)	547 (99%)	5 (1%)	70	64
1	B	552/554 (100%)	546 (99%)	6 (1%)	65	57
All	All	1104/1108 (100%)	1093 (99%)	11 (1%)	68	60

All (11) residues with a non-rotameric sidechain are listed below:

Mol	Chain	Res	Type
1	A	67	ASN
1	A	113	VAL
1	A	416	ILE
1	A	528	ARG
1	A	635	ARG
1	B	67	ASN
1	B	483	PRO
1	B	486	THR
1	B	528	ARG
1	B	588	LEU

Continued on next page...

Continued from previous page...

Mol	Chain	Res	Type
1	B	635	ARG

Sometimes sidechains can be flipped to improve hydrogen bonding and reduce clashes. All (28) such sidechains are listed below:

Mol	Chain	Res	Type
1	A	27	ASN
1	A	54	ASN
1	A	67	ASN
1	A	124	ASN
1	A	132	GLN
1	A	221	ASN
1	A	298	GLN
1	A	309	ASN
1	A	320	GLN
1	A	337	GLN
1	A	341	ASN
1	A	530	ASN
1	A	554	ASN
1	B	27	ASN
1	B	54	ASN
1	B	67	ASN
1	B	124	ASN
1	B	132	GLN
1	B	296	HIS
1	B	298	GLN
1	B	309	ASN
1	B	313	ASN
1	B	320	GLN
1	B	337	GLN
1	B	341	ASN
1	B	530	ASN
1	B	554	ASN
1	B	580	ASN

5.3.3 RNA ⓘ

There are no RNA molecules in this entry.

5.4 Non-standard residues in protein, DNA, RNA chains [i](#)

There are no non-standard protein/DNA/RNA residues in this entry.

5.5 Carbohydrates [i](#)

There are no oligosaccharides in this entry.

5.6 Ligand geometry [i](#)

Of 4 ligands modelled in this entry, 2 are monoatomic - leaving 2 for Mogul analysis.

In the following table, the Counts columns list the number of bonds (or angles) for which Mogul statistics could be retrieved, the number of bonds (or angles) that are observed in the model and the number of bonds (or angles) that are defined in the Chemical Component Dictionary. The Link column lists molecule types, if any, to which the group is linked. The Z score for a bond length (or angle) is the number of standard deviations the observed value is removed from the expected value. A bond length (or angle) with $|Z| > 2$ is considered an outlier worth inspection. RMSZ is the root-mean-square of all Z scores of the bond lengths (or angles).

Mol	Type	Chain	Res	Link	Bond lengths			Bond angles		
					Counts	RMSZ	# $ Z > 2$	Counts	RMSZ	# $ Z > 2$
3	THD	A	1682	2	29,31,31	1.94	10 (34%)	36,46,46	2.00	13 (36%)
3	THD	B	1682	2	29,31,31	2.01	9 (31%)	36,46,46	1.99	13 (36%)

In the following table, the Chirals column lists the number of chiral outliers, the number of chiral centers analysed, the number of these observed in the model and the number defined in the Chemical Component Dictionary. Similar counts are reported in the Torsion and Rings columns. '-' means no outliers of that kind were identified.

Mol	Type	Chain	Res	Link	Chirals	Torsions	Rings
3	THD	A	1682	2	-	4/18/23/23	0/2/2/2
3	THD	B	1682	2	-	5/18/23/23	0/2/2/2

All (19) bond length outliers are listed below:

Mol	Chain	Res	Type	Atoms	Z	Observed(Å)	Ideal(Å)
3	B	1682	THD	C7'-N3	5.83	1.57	1.47
3	A	1682	THD	C7'-N3	5.37	1.56	1.47
3	B	1682	THD	C4'-N3'	4.56	1.41	1.35
3	A	1682	THD	C4'-N3'	4.23	1.40	1.35
3	B	1682	THD	C6'-N1'	2.79	1.40	1.34
3	B	1682	THD	C5-S1	-2.78	1.68	1.74

Continued on next page...

Continued from previous page...

Mol	Chain	Res	Type	Atoms	Z	Observed(Å)	Ideal(Å)
3	A	1682	THD	C6'-N1'	2.62	1.39	1.34
3	B	1682	THD	O9-C8	-2.57	1.25	1.32
3	A	1682	THD	O9-C8	-2.52	1.25	1.32
3	B	1682	THD	PB-O2B	-2.39	1.45	1.54
3	A	1682	THD	PB-O2B	-2.34	1.46	1.54
3	A	1682	THD	C5-S1	-2.29	1.69	1.74
3	A	1682	THD	C5'-C4'	2.28	1.46	1.42
3	B	1682	THD	C5'-C4'	2.25	1.46	1.42
3	A	1682	THD	PA-O3A	2.16	1.61	1.59
3	B	1682	THD	C7'-C5'	2.08	1.55	1.51
3	B	1682	THD	C4-N3	-2.07	1.35	1.39
3	A	1682	THD	C4-N3	-2.06	1.35	1.39
3	A	1682	THD	PA-O2A	-2.02	1.43	1.50

All (26) bond angle outliers are listed below:

Mol	Chain	Res	Type	Atoms	Z	Observed(°)	Ideal(°)
3	B	1682	THD	O3A-PA-O2A	-4.86	96.09	110.70
3	A	1682	THD	O3A-PA-O2A	-4.60	96.86	110.70
3	B	1682	THD	C5'-C7'-N3	-3.69	108.67	113.14
3	A	1682	THD	C7'-N3-C4	-3.48	120.56	124.98
3	A	1682	THD	O1A-PA-O3A	3.31	116.23	107.27
3	B	1682	THD	O1A-PA-O3A	3.23	116.01	107.27
3	B	1682	THD	C7'-N3-C4	-3.20	120.92	124.98
3	A	1682	THD	O7-PA-O2A	-3.16	96.42	108.94
3	A	1682	THD	C5'-C7'-N3	-3.10	109.39	113.14
3	B	1682	THD	O7-PA-O2A	-3.09	96.70	108.94
3	A	1682	THD	O3A-PB-O1B	-2.94	95.56	111.04
3	B	1682	THD	N1'-C2'-N3'	-2.93	120.66	125.53
3	B	1682	THD	O3A-PB-O1B	-2.89	95.85	111.04
3	A	1682	THD	N1'-C2'-N3'	-2.84	120.81	125.53
3	A	1682	THD	C7'-C5'-C4'	2.83	125.43	122.56
3	A	1682	THD	C6'-N1'-C2'	2.63	120.39	116.07
3	B	1682	THD	C6'-N1'-C2'	2.63	120.39	116.07
3	A	1682	THD	CM2-C2'-N3'	2.44	120.78	117.13
3	B	1682	THD	CM2-C2'-N3'	2.41	120.74	117.13
3	B	1682	THD	C7'-C5'-C4'	2.28	124.87	122.56
3	A	1682	THD	O3B-PB-O1B	2.18	119.33	110.83
3	A	1682	THD	O1A-PA-O7	2.18	117.45	107.57
3	B	1682	THD	O3B-PB-O1B	2.16	119.26	110.83
3	A	1682	THD	O9-C8-C9	2.14	119.46	113.91
3	B	1682	THD	O1A-PA-O7	2.11	117.15	107.57

Continued on next page...

Continued from previous page...

Mol	Chain	Res	Type	Atoms	Z	Observed(°)	Ideal(°)
3	B	1682	THD	O9-C8-C9	2.10	119.36	113.91

There are no chirality outliers.

All (9) torsion outliers are listed below:

Mol	Chain	Res	Type	Atoms
3	A	1682	THD	O9-C8-C9-O10
3	B	1682	THD	O9-C8-C9-O10
3	A	1682	THD	PB-O3A-PA-O7
3	B	1682	THD	PB-O3A-PA-O7
3	A	1682	THD	C5-C6-C7-O7
3	B	1682	THD	C5-C6-C7-O7
3	B	1682	THD	S1-C5-C6-C7
3	A	1682	THD	S1-C5-C6-C7
3	B	1682	THD	C4-C5-C6-C7

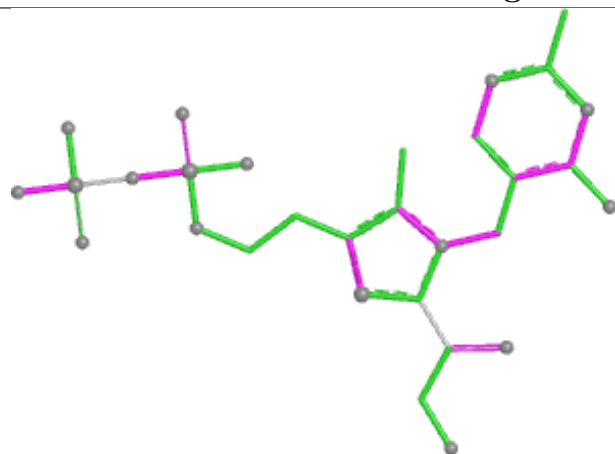
There are no ring outliers.

2 monomers are involved in 4 short contacts:

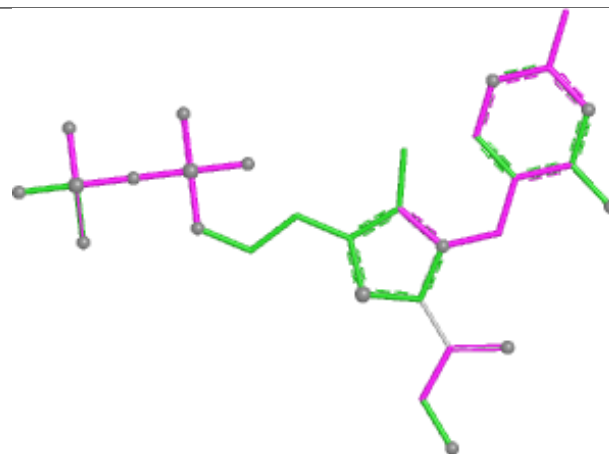
Mol	Chain	Res	Type	Clashes	Symm-Clashes
3	A	1682	THD	2	0
3	B	1682	THD	2	0

The following is a two-dimensional graphical depiction of Mogul quality analysis of bond lengths, bond angles, torsion angles, and ring geometry for all instances of the Ligand of Interest. In addition, ligands with molecular weight > 250 and outliers as shown on the validation Tables will also be included. For torsion angles, if less than 5% of the Mogul distribution of torsion angles is within 10 degrees of the torsion angle in question, then that torsion angle is considered an outlier. Any bond that is central to one or more torsion angles identified as an outlier by Mogul will be highlighted in the graph. For rings, the root-mean-square deviation (RMSD) between the ring in question and similar rings identified by Mogul is calculated over all ring torsion angles. If the average RMSD is greater than 60 degrees and the minimal RMSD between the ring in question and any Mogul-identified rings is also greater than 60 degrees, then that ring is considered an outlier. The outliers are highlighted in purple. The color gray indicates Mogul did not find sufficient equivalents in the CSD to analyse the geometry.

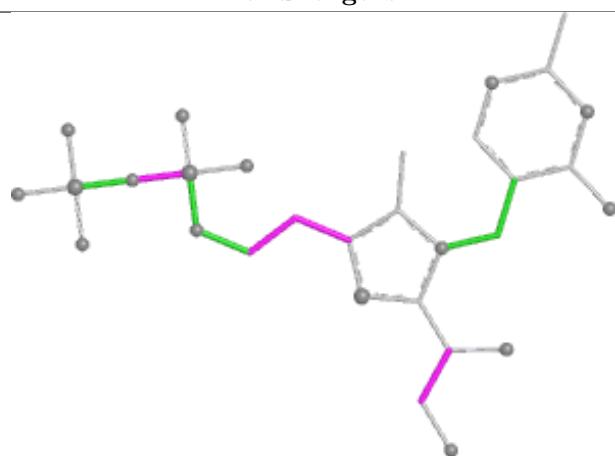
Ligand THD A 1682



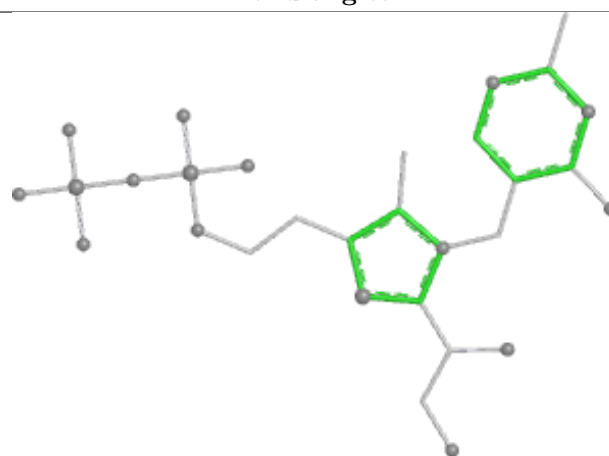
Bond lengths



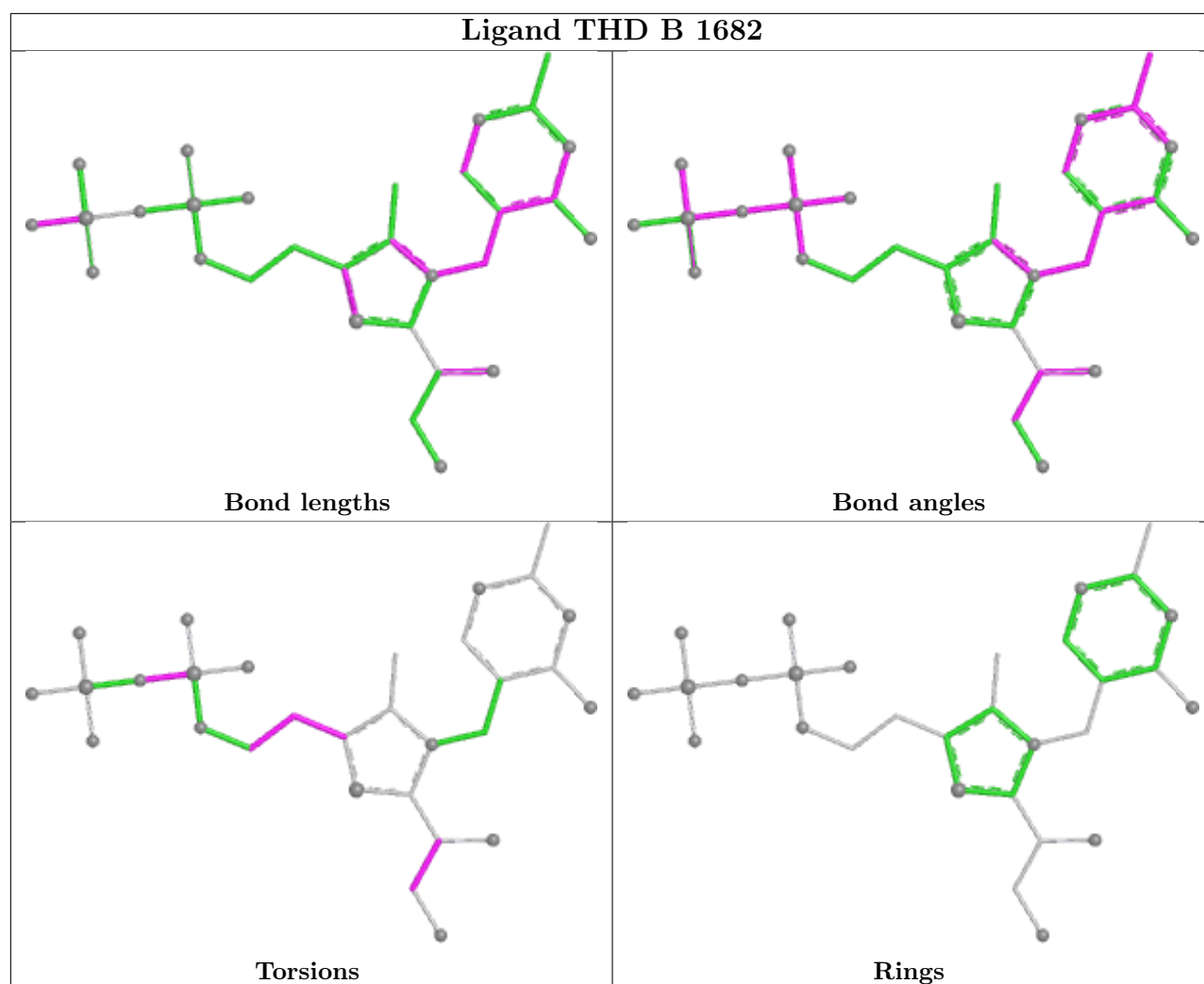
Bond angles



Torsions



Rings



5.7 Other polymers [i](#)

There are no such residues in this entry.

5.8 Polymer linkage issues [i](#)

There are no chain breaks in this entry.

6 Fit of model and data

6.1 Protein, DNA and RNA chains

In the following table, the column labelled ‘#RSRZ> 2’ contains the number (and percentage) of RSRZ outliers, followed by percent RSRZ outliers for the chain as percentile scores relative to all X-ray entries and entries of similar resolution. The OWAB column contains the minimum, median, 95th percentile and maximum values of the occupancy-weighted average B-factor per residue. The column labelled ‘Q< 0.9’ lists the number of (and percentage) of residues with an average occupancy less than 0.9.

Mol	Chain	Analysed	<RSRZ>	#RSRZ>2	OWAB(Å ²)	Q<0.9
1	A	678/680 (99%)	0.52	46 (6%) 23 25	13, 20, 32, 47	0
1	B	678/680 (99%)	0.42	33 (4%) 35 38	12, 18, 31, 46	0
All	All	1356/1360 (99%)	0.47	79 (5%) 29 31	12, 19, 32, 47	0

All (79) RSRZ outliers are listed below:

Mol	Chain	Res	Type	RSRZ
1	A	528	ARG	5.6
1	A	323	PHE	5.2
1	A	405	GLY	4.9
1	A	402	SER	4.8
1	B	578	ALA	4.4
1	A	322	LYS	4.0
1	B	528	ARG	3.9
1	A	331	ALA	3.8
1	A	319	TYR	3.7
1	A	404	SER	3.7
1	B	535	GLU	3.6
1	A	391	TRP	3.4
1	A	341	ASN	3.2
1	B	391	TRP	3.1
1	A	3	GLN	3.1
1	A	371	ASN	3.0
1	A	324	PRO	3.0
1	A	600	GLU	3.0
1	B	53	THR	3.0
1	B	354	SER	2.9
1	A	325	GLU	2.9
1	B	285	LYS	2.9
1	A	317	SER	2.9
1	A	401	SER	2.9

Continued on next page...

Continued from previous page...

Mol	Chain	Res	Type	RSRZ
1	B	392	LYS	2.8
1	A	239	ASP	2.8
1	A	350	THR	2.8
1	A	400	PRO	2.7
1	B	325	GLU	2.7
1	B	264	GLY	2.6
1	B	255	LEU	2.6
1	B	258	GLY	2.6
1	A	531	LEU	2.6
1	B	404	SER	2.6
1	A	142	PRO	2.6
1	A	393	GLU	2.6
1	B	322	LYS	2.6
1	A	144	PHE	2.5
1	A	268	LYS	2.5
1	B	371	ASN	2.5
1	B	355	ALA	2.5
1	A	345	LYS	2.5
1	A	534	LEU	2.5
1	B	323	PHE	2.4
1	B	268	LYS	2.4
1	B	314	LYS	2.4
1	A	672	LEU	2.4
1	A	347	PRO	2.4
1	A	340	ALA	2.4
1	A	532	PRO	2.4
1	A	351	ALA	2.3
1	A	395	LEU	2.3
1	A	580	ASN	2.3
1	B	554	ASN	2.3
1	B	269	ALA	2.3
1	A	264	GLY	2.3
1	A	392	LYS	2.3
1	A	327	GLY	2.2
1	B	577	ALA	2.2
1	A	321	LYS	2.2
1	A	596	LYS	2.2
1	A	316	PHE	2.2
1	A	668	LYS	2.2
1	A	372	GLN	2.2
1	A	353	ASP	2.2
1	B	353	ASP	2.2

Continued on next page...

Continued from previous page...

Mol	Chain	Res	Type	RSRZ
1	B	394	ALA	2.2
1	B	265	ALA	2.2
1	B	278	LYS	2.2
1	B	352	LYS	2.2
1	A	370	TYR	2.1
1	B	218	GLU	2.1
1	B	319	TYR	2.1
1	B	552	VAL	2.1
1	B	50	MET	2.1
1	A	275	LEU	2.1
1	A	328	ALA	2.1
1	B	279	PHE	2.0
1	B	668	LYS	2.0

6.2 Non-standard residues in protein, DNA, RNA chains [i](#)

There are no non-standard protein/DNA/RNA residues in this entry.

6.3 Carbohydrates [i](#)

There are no oligosaccharides in this entry.

6.4 Ligands [i](#)

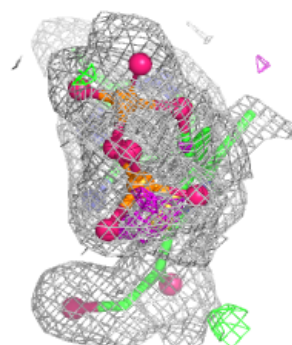
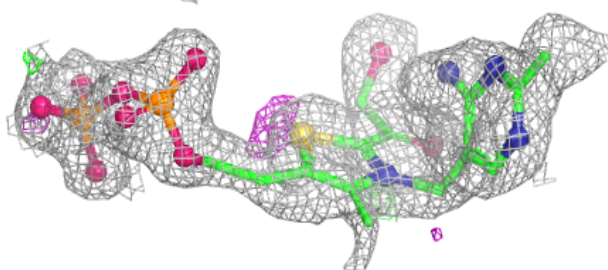
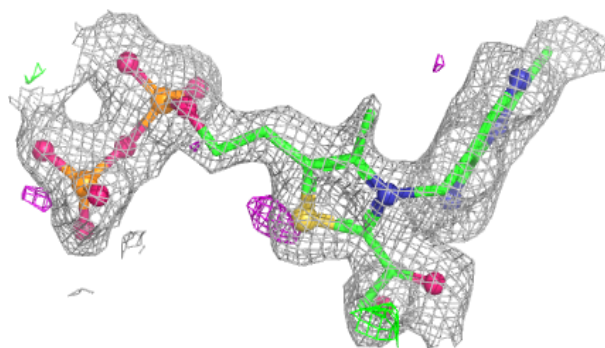
In the following table, the Atoms column lists the number of modelled atoms in the group and the number defined in the chemical component dictionary. The B-factors column lists the minimum, median, 95th percentile and maximum values of B factors of atoms in the group. The column labelled 'Q< 0.9' lists the number of atoms with occupancy less than 0.9.

Mol	Type	Chain	Res	Atoms	RSCC	RSR	B-factors(\AA^2)	Q<0.9
2	CA	B	1681	1/1	0.28	0.48	71,71,71,71	0
3	THD	A	1682	30/30	0.94	0.08	13,20,23,26	0
3	THD	B	1682	30/30	0.94	0.09	11,19,24,24	0
2	CA	A	1681	1/1	0.99	0.02	18,18,18,18	0

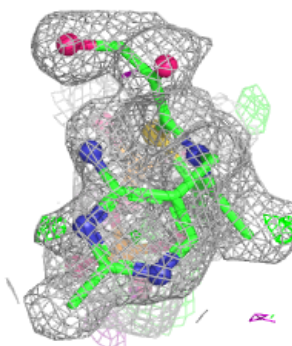
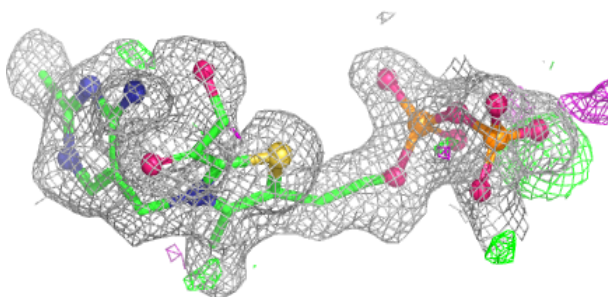
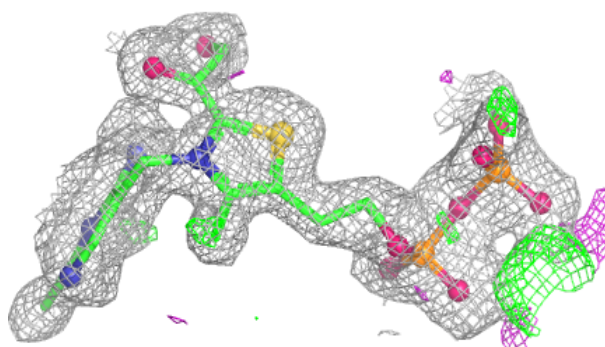
The following is a graphical depiction of the model fit to experimental electron density of all instances of the Ligand of Interest. In addition, ligands with molecular weight > 250 and outliers as shown on the geometry validation Tables will also be included. Each fit is shown from different orientation to approximate a three-dimensional view.

Electron density around THD A 1682:

$2mF_o-DF_c$ (at 0.7 rmsd) in gray
 mF_o-DF_c (at 3 rmsd) in purple (negative)
and green (positive)

**Electron density around THD B 1682:**

$2mF_o-DF_c$ (at 0.7 rmsd) in gray
 mF_o-DF_c (at 3 rmsd) in purple (negative)
and green (positive)



6.5 Other polymers [i](#)

There are no such residues in this entry.