



Full wwPDB X-ray Structure Validation Report ⓘ

Mar 10, 2026 – 02:31 AM UTC

PDB ID : 4CLI / pdb_00004cli
Title : Structure of the Human Anaplastic Lymphoma Kinase in Complex with PF-06463922 ((10R)-7-amino-12-fluoro-2,10,16-trimethyl-15-oxo-10,15,16, 17-tetrahydro-2H-8,4-(metheno)pyrazolo(4,3-h)(2,5,11) benzoxadiazacyclotetradecine-3-carbonitrile).
Authors : McTigue, M.A.; Deng, Y.L.; Liu, W.; Brooun, A.; Stewart, A.E.
Deposited on : 2014-01-14
Resolution : 2.05 Å(reported)

This is a Full wwPDB X-ray Structure Validation Report for a publicly released PDB entry.

We welcome your comments at validation@mail.wwpdb.org

A user guide is available at

<https://www.wwpdb.org/validation/2017/XrayValidationReportHelp>

with specific help available everywhere you see the ⓘ symbol.

The types of validation reports are described at

<http://www.wwpdb.org/validation/2017/FAQs#types>.

The following versions of software and data (see [references](#) ①) were used in the production of this report:

MolProbity	:	4-5-2 with Phenix2.0
Mogul	:	2022.3.0, CSD as543be (2022)
Xtriage (Phenix)	:	2.0
EDS	:	3.0
Buster-report	:	wwPDB partial adaption of 1.1.7 (2018)
Percentile statistics	:	20250101.v01 (using entries in the PDB archive January 1st 2025)
CCP4	:	9.0.010 (Gargrove)
Density-Fitness	:	1.0.12
Ideal geometry (proteins)	:	Engh & Huber (2001)
Ideal geometry (DNA, RNA)	:	Parkinson et al. (1996)
Validation Pipeline (wwPDB-VP)	:	2.49

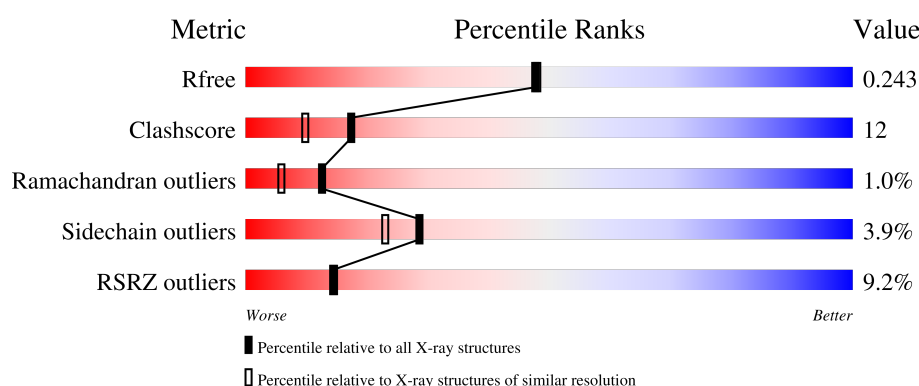
1 Overall quality at a glance

The following experimental techniques were used to determine the structure:

X-RAY DIFFRACTION

The reported resolution of this entry is 2.05 Å.

Percentile scores (ranging between 0-100) for global validation metrics of the entry are shown in the following graphic. The table shows the number of entries on which the scores are based.



Metric	Whole archive (#Entries)	Similar resolution (#Entries, resolution range(Å))
R_{free}	180053	2260 (2.04-2.04)
Clashscore	190562	2333 (2.04-2.04)
Ramachandran outliers	187476	2318 (2.04-2.04)
Sidechain outliers	187428	2318 (2.04-2.04)
RSRZ outliers	180081	2260 (2.04-2.04)

The table below summarises the geometric issues observed across the polymeric chains and their fit to the electron density. The red, orange, yellow and green segments of the lower bar indicate the fraction of residues that contain outliers for ≥ 3 , 2, 1 and 0 types of geometric quality criteria respectively. A grey segment represents the fraction of residues that are not modelled. The numeric value for each fraction is indicated below the corresponding segment, with a dot representing fractions $\leq 5\%$. The upper red bar (where present) indicates the fraction of residues that have poor fit to the electron density. The numeric value is given above the bar.

Mol	Chain	Length	Quality of chain
1	A	327	<div> <div>8%</div> <div>70%</div> <div>18%</div> <div>•</div> <div>10%</div> </div>

2 Entry composition

There are 3 unique types of molecules in this entry. The entry contains 2576 atoms, of which 0 are hydrogens and 0 are deuteriums.

In the tables below, the ZeroOcc column contains the number of atoms modelled with zero occupancy, the AltConf column contains the number of residues with at least one atom in alternate conformation and the Trace column contains the number of residues modelled with at most 2 atoms.

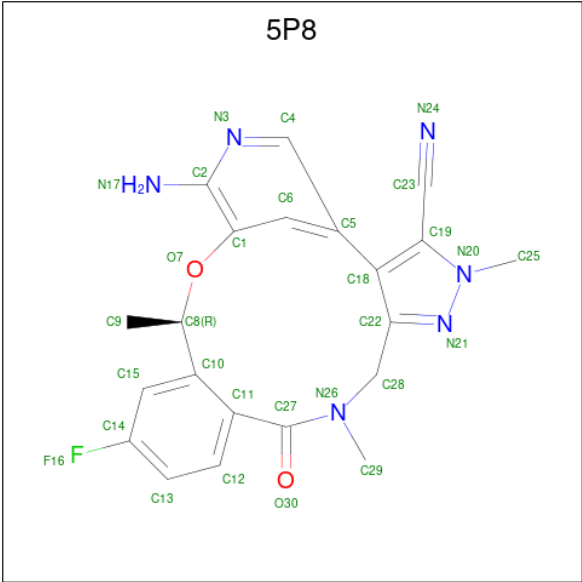
- Molecule 1 is a protein called ALK TYROSINE KINASE RECEPTOR.

Mol	Chain	Residues	Atoms					ZeroOcc	AltConf	Trace
			Total	C	N	O	S			
1	A	295	2314	1475	396	422	21	0	0	1

There are 8 discrepancies between the modelled and reference sequences:

Chain	Residue	Modelled	Actual	Comment	Reference
A	1085	MET	-	expression tag	UNP Q9UM73
A	1086	ALA	-	expression tag	UNP Q9UM73
A	1087	HIS	-	expression tag	UNP Q9UM73
A	1088	HIS	-	expression tag	UNP Q9UM73
A	1089	HIS	-	expression tag	UNP Q9UM73
A	1090	HIS	-	expression tag	UNP Q9UM73
A	1091	HIS	-	expression tag	UNP Q9UM73
A	1092	HIS	-	expression tag	UNP Q9UM73

- Molecule 2 is (10R)-7-amino-12-fluoro-2,10,16-trimethyl-15-oxo-10,15,16,17-tetrahydro-2H-8,4-(metheno)pyrazolo[4,3-h][2,5,11]benzoxadiazacyclotetradecine-3-carbonitrile (CCD ID: 5P8) (formula: C₂₁H₁₉FN₆O₂).

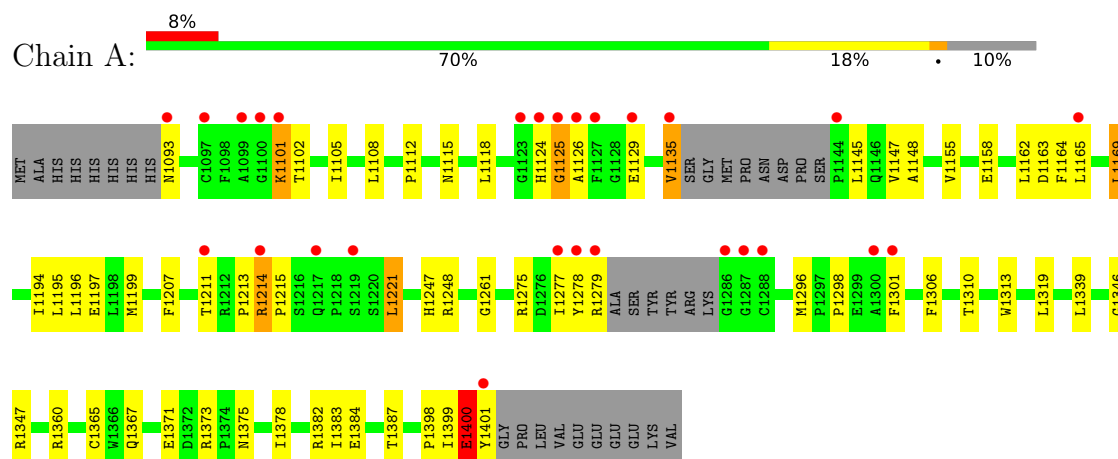


Mol	Chain	Residues	Atoms					ZeroOcc	AltConf
2	A	1	Total	C	F	N	O	0	0
			30	21	1	6	2		

- Molecule 3 is water.

Mol	Chain	Residues	Atoms		ZeroOcc	AltConf
3	A	232	Total	O	0	0
			232	232		

- Molecule 1: ALK TYROSINE KINASE RECEPTOR



4 Data and refinement statistics

Property	Value	Source
Space group	P 21 21 21	Depositor
Cell constants a, b, c, α , β , γ	51.76Å 57.28Å 105.02Å 90.00° 90.00° 90.00°	Depositor
Resolution (Å)	52.51 – 2.05 52.51 – 2.05	Depositor EDS
% Data completeness (in resolution range)	94.8 (52.51-2.05) 94.8 (52.51-2.05)	Depositor EDS
R_{merge}	0.11	Depositor
R_{sym}	(Not available)	Depositor
$\langle I/\sigma(I) \rangle$ ¹	2.10 (at 1.94Å)	Xtriage
Refinement program	CNX 2005	Depositor
R, R_{free}	0.198 , 0.245 (Not available) , 0.243	Depositor DCC
R_{free} test set	1325 reflections (2.98%)	wwPDB-VP
Wilson B-factor (Å ²)	22.3	Xtriage
Anisotropy	0.322	Xtriage
Bulk solvent k_{sol} (e/Å ³), B_{sol} (Å ²)	0.35 , 50.2	EDS
L-test for twinning ²	$\langle L \rangle = 0.47$, $\langle L^2 \rangle = 0.31$	Xtriage
Estimated twinning fraction	No twinning to report.	Xtriage
F_o, F_c correlation	0.94	EDS
Total number of atoms	2576	wwPDB-VP
Average B, all atoms (Å ²)	29.0	wwPDB-VP

Xtriage's analysis on translational NCS is as follows: *The largest off-origin peak in the Patterson function is 5.79% of the height of the origin peak. No significant pseudotranslation is detected.*

¹Intensities estimated from amplitudes.

²Theoretical values of $\langle |L| \rangle$, $\langle L^2 \rangle$ for acentric reflections are 0.5, 0.333 respectively for untwinned datasets, and 0.375, 0.2 for perfectly twinned datasets.

5 Model quality [i](#)

5.1 Standard geometry [i](#)

Bond lengths and bond angles in the following residue types are not validated in this section: 5P8

The Z score for a bond length (or angle) is the number of standard deviations the observed value is removed from the expected value. A bond length (or angle) with $|Z| > 5$ is considered an outlier worth inspection. RMSZ is the root-mean-square of all Z scores of the bond lengths (or angles).

Mol	Chain	Bond lengths		Bond angles	
		RMSZ	$\# Z > 5$	RMSZ	$\# Z > 5$
1	A	0.37	1/2370 (0.0%)	0.68	2/3212 (0.1%)

All (1) bond length outliers are listed below:

Mol	Chain	Res	Type	Atoms	Z	Observed(Å)	Ideal(Å)
1	A	1400	GLU	C-N	-5.64	1.25	1.33

All (2) bond angle outliers are listed below:

Mol	Chain	Res	Type	Atoms	Z	Observed(°)	Ideal(°)
1	A	1261	GLY	CA-C-N	6.75	126.70	119.28
1	A	1261	GLY	C-N-CA	6.75	126.70	119.28

There are no chirality outliers.

There are no planarity outliers.

5.2 Too-close contacts [i](#)

In the following table, the Non-H and H(model) columns list the number of non-hydrogen atoms and hydrogen atoms in the chain respectively. The H(added) column lists the number of hydrogen atoms added and optimized by MolProbity. The Clashes column lists the number of clashes within the asymmetric unit, whereas Symm-Clashes lists symmetry-related clashes.

Mol	Chain	Non-H	H(model)	H(added)	Clashes	Symm-Clashes
1	A	2314	0	2295	58	0
2	A	30	0	19	0	0
3	A	232	0	0	6	0
All	All	2576	0	2314	58	0

The all-atom clashscore is defined as the number of clashes found per 1000 atoms (including hydrogen atoms). The all-atom clashscore for this structure is 12.

All (58) close contacts within the same asymmetric unit are listed below, sorted by their clash magnitude.

Atom-1	Atom-2	Interatomic distance (Å)	Clash overlap (Å)
1:A:1197:GLU:HG2	1:A:1199:MET:HE3	1.50	0.91
1:A:1214:ARG:HG3	1:A:1215:PRO:HD2	1.60	0.83
1:A:1248:ARG:CZ	1:A:1277:ILE:HG21	2.12	0.79
1:A:1199:MET:HA	1:A:1199:MET:HE2	1.65	0.77
1:A:1211:THR:HG23	1:A:1221:LEU:HD22	1.68	0.75
1:A:1378:ILE:HG22	1:A:1382:ARG:HE	1.52	0.74
1:A:1279:ARG:HA	1:A:1279:ARG:HE	1.54	0.73
1:A:1101:LYS:HE3	1:A:1102:THR:H	1.55	0.69
1:A:1101:LYS:HE3	1:A:1102:THR:N	2.07	0.68
1:A:1367:GLN:HB2	1:A:1373:ARG:HG2	1.77	0.66
1:A:1383:ILE:O	1:A:1387:THR:HG23	1.96	0.66
1:A:1387:THR:HG21	3:A:2111:HOH:O	1.97	0.64
1:A:1105:ILE:HD13	1:A:1169:LEU:HD11	1.80	0.63
1:A:1279:ARG:HA	1:A:1279:ARG:NE	2.13	0.63
1:A:1155:VAL:O	1:A:1155:VAL:HG23	2.00	0.62
1:A:1093:ASN:HB2	3:A:2030:HOH:O	2.00	0.62
1:A:1135:VAL:HG13	1:A:1145:LEU:HB3	1.81	0.61
1:A:1207:PHE:O	1:A:1211:THR:HG22	2.01	0.60
1:A:1278:TYR:O	1:A:1279:ARG:HB2	2.01	0.60
1:A:1214:ARG:HG3	1:A:1215:PRO:CD	2.33	0.58
1:A:1346:GLY:O	1:A:1347:ARG:HD3	2.05	0.57
1:A:1296:MET:HE3	3:A:2136:HOH:O	2.04	0.56
1:A:1105:ILE:HG12	3:A:2030:HOH:O	2.05	0.56
1:A:1112:PRO:HG2	1:A:1115:ASN:OD1	2.06	0.56
1:A:1124:HIS:CD2	1:A:1125:GLY:H	2.25	0.55
1:A:1248:ARG:NH2	1:A:1277:ILE:HG21	2.21	0.55
1:A:1365:CYS:O	1:A:1373:ARG:HD2	2.07	0.55
1:A:1367:GLN:O	1:A:1373:ARG:HD3	2.09	0.53
1:A:1108:LEU:HD21	1:A:1169:LEU:HD12	1.91	0.51
1:A:1375:ASN:OD1	1:A:1378:ILE:HG12	2.10	0.51
1:A:1135:VAL:CG1	1:A:1145:LEU:HB3	2.41	0.51
1:A:1247:HIS:O	1:A:1248:ARG:HB2	2.11	0.51
1:A:1147:VAL:HG13	1:A:1196:LEU:O	2.12	0.50
1:A:1163:ASP:HB3	1:A:1275:ARG:NH1	2.28	0.49
1:A:1163:ASP:HA	1:A:1275:ARG:HD3	1.94	0.49
1:A:1339:LEU:C	1:A:1339:LEU:HD23	2.37	0.49
1:A:1197:GLU:HG2	1:A:1199:MET:CE	2.33	0.49

Continued on next page...

Continued from previous page...

Atom-1	Atom-2	Interatomic distance (Å)	Clash overlap (Å)
1:A:1147:VAL:HG11	1:A:1195:LEU:HB3	1.94	0.49
1:A:1306:PHE:HD2	1:A:1310:THR:HG21	1.79	0.48
1:A:1158:GLU:O	1:A:1162:LEU:HG	2.14	0.47
1:A:1147:VAL:HG12	1:A:1148:ALA:N	2.28	0.47
1:A:1124:HIS:CG	1:A:1125:GLY:H	2.33	0.47
1:A:1211:THR:HG23	1:A:1221:LEU:CD2	2.40	0.46
1:A:1124:HIS:HB3	1:A:1129:GLU:HG2	1.98	0.46
1:A:1382:ARG:HD3	3:A:2208:HOH:O	2.15	0.46
1:A:1164:PHE:CZ	1:A:1194:ILE:HG13	2.52	0.45
1:A:1378:ILE:CG2	1:A:1382:ARG:HE	2.24	0.45
1:A:1248:ARG:NH1	1:A:1277:ILE:HG13	2.32	0.45
1:A:1108:LEU:HD11	1:A:1169:LEU:CD1	2.48	0.44
1:A:1199:MET:HE2	1:A:1199:MET:CA	2.43	0.44
1:A:1248:ARG:HD3	1:A:1277:ILE:HG13	2.00	0.43
1:A:1213:PRO:HG2	1:A:1398:PRO:O	2.18	0.43
1:A:1399:ILE:O	1:A:1401:TYR:N	2.52	0.42
1:A:1313:TRP:CD1	1:A:1313:TRP:C	2.99	0.41
1:A:1147:VAL:CG1	1:A:1148:ALA:N	2.83	0.41
1:A:1298:PRO:HA	1:A:1301:PHE:CZ	2.56	0.41
1:A:1319:LEU:HD23	1:A:1319:LEU:HA	1.88	0.40
1:A:1371:GLU:HA	3:A:2171:HOH:O	2.20	0.40

There are no symmetry-related clashes.

5.3 Torsion angles ⓘ

5.3.1 Protein backbone ⓘ

In the following table, the Percentiles column shows the percent Ramachandran outliers of the chain as a percentile score with respect to all X-ray entries followed by that with respect to entries of similar resolution.

The Analysed column shows the number of residues for which the backbone conformation was analysed, and the total number of residues.

Mol	Chain	Analysed	Favoured	Allowed	Outliers	Percentiles
1	A	289/327 (88%)	280 (97%)	6 (2%)	3 (1%)	12 6

All (3) Ramachandran outliers are listed below:

Mol	Chain	Res	Type
1	A	1400	GLU
1	A	1125	GLY
1	A	1126	ALA

5.3.2 Protein sidechains [i](#)

In the following table, the Percentiles column shows the percent sidechain outliers of the chain as a percentile score with respect to all X-ray entries followed by that with respect to entries of similar resolution.

The Analysed column shows the number of residues for which the sidechain conformation was analysed, and the total number of residues.

Mol	Chain	Analysed	Rotameric	Outliers	Percentiles	
1	A	256/285 (90%)	246 (96%)	10 (4%)	28	23

All (10) residues with a non-rotameric sidechain are listed below:

Mol	Chain	Res	Type
1	A	1101	LYS
1	A	1118	LEU
1	A	1135	VAL
1	A	1165	LEU
1	A	1169	LEU
1	A	1214	ARG
1	A	1221	LEU
1	A	1360	ARG
1	A	1384	GLU
1	A	1400	GLU

Sometimes sidechains can be flipped to improve hydrogen bonding and reduce clashes. All (7) such sidechains are listed below:

Mol	Chain	Res	Type
1	A	1093	ASN
1	A	1124	HIS
1	A	1159	GLN
1	A	1188	GLN
1	A	1217	GLN
1	A	1243	ASN
1	A	1368	HIS

5.3.3 RNA ⓘ

There are no RNA molecules in this entry.

5.4 Non-standard residues in protein, DNA, RNA chains ⓘ

There are no non-standard protein/DNA/RNA residues in this entry.

5.5 Carbohydrates ⓘ

There are no oligosaccharides in this entry.

5.6 Ligand geometry ⓘ

1 ligand is modelled in this entry.

In the following table, the Counts columns list the number of bonds (or angles) for which Mogul statistics could be retrieved, the number of bonds (or angles) that are observed in the model and the number of bonds (or angles) that are defined in the Chemical Component Dictionary. The Link column lists molecule types, if any, to which the group is linked. The Z score for a bond length (or angle) is the number of standard deviations the observed value is removed from the expected value. A bond length (or angle) with $|Z| > 2$ is considered an outlier worth inspection. RMSZ is the root-mean-square of all Z scores of the bond lengths (or angles).

Mol	Type	Chain	Res	Link	Bond lengths			Bond angles		
					Counts	RMSZ	$\# Z > 2$	Counts	RMSZ	$\# Z > 2$
2	5P8	A	2401	-	31,33,33	2.18	10 (32%)	39,49,49	1.82	9 (23%)

In the following table, the Chirals column lists the number of chiral outliers, the number of chiral centers analysed, the number of these observed in the model and the number defined in the Chemical Component Dictionary. Similar counts are reported in the Torsion and Rings columns. '-' means no outliers of that kind were identified.

Mol	Type	Chain	Res	Link	Chirals	Torsions	Rings
2	5P8	A	2401	-	-	2/24/26/26	0/3/4/4

All (10) bond length outliers are listed below:

Mol	Chain	Res	Type	Atoms	Z	Observed(Å)	Ideal(Å)
2	A	2401	5P8	C27-N26	5.96	1.44	1.34
2	A	2401	5P8	C11-C10	5.40	1.46	1.40
2	A	2401	5P8	C28-N26	3.68	1.52	1.46

Continued on next page...

Continued from previous page...

Mol	Chain	Res	Type	Atoms	Z	Observed(Å)	Ideal(Å)
2	A	2401	5P8	C2-N17	2.97	1.41	1.34
2	A	2401	5P8	C15-C10	2.90	1.44	1.39
2	A	2401	5P8	C12-C11	2.68	1.44	1.39
2	A	2401	5P8	C15-C14	2.35	1.41	1.37
2	A	2401	5P8	C4-N3	2.32	1.39	1.34
2	A	2401	5P8	C19-N20	2.27	1.38	1.36
2	A	2401	5P8	C6-C1	2.07	1.42	1.38

All (9) bond angle outliers are listed below:

Mol	Chain	Res	Type	Atoms	Z	Observed(°)	Ideal(°)
2	A	2401	5P8	C6-C5-C4	-4.06	113.75	117.92
2	A	2401	5P8	C19-N20-N21	4.03	114.42	111.20
2	A	2401	5P8	C5-C6-C1	3.92	124.86	119.60
2	A	2401	5P8	C4-C5-C18	3.84	126.49	120.84
2	A	2401	5P8	C28-C22-N21	-3.45	115.89	119.63
2	A	2401	5P8	O30-C27-C11	-3.13	113.92	120.06
2	A	2401	5P8	C29-N26-C27	-2.77	116.01	123.14
2	A	2401	5P8	C28-N26-C27	2.47	126.43	119.97
2	A	2401	5P8	C11-C10-C8	2.13	124.03	121.62

There are no chirality outliers.

All (2) torsion outliers are listed below:

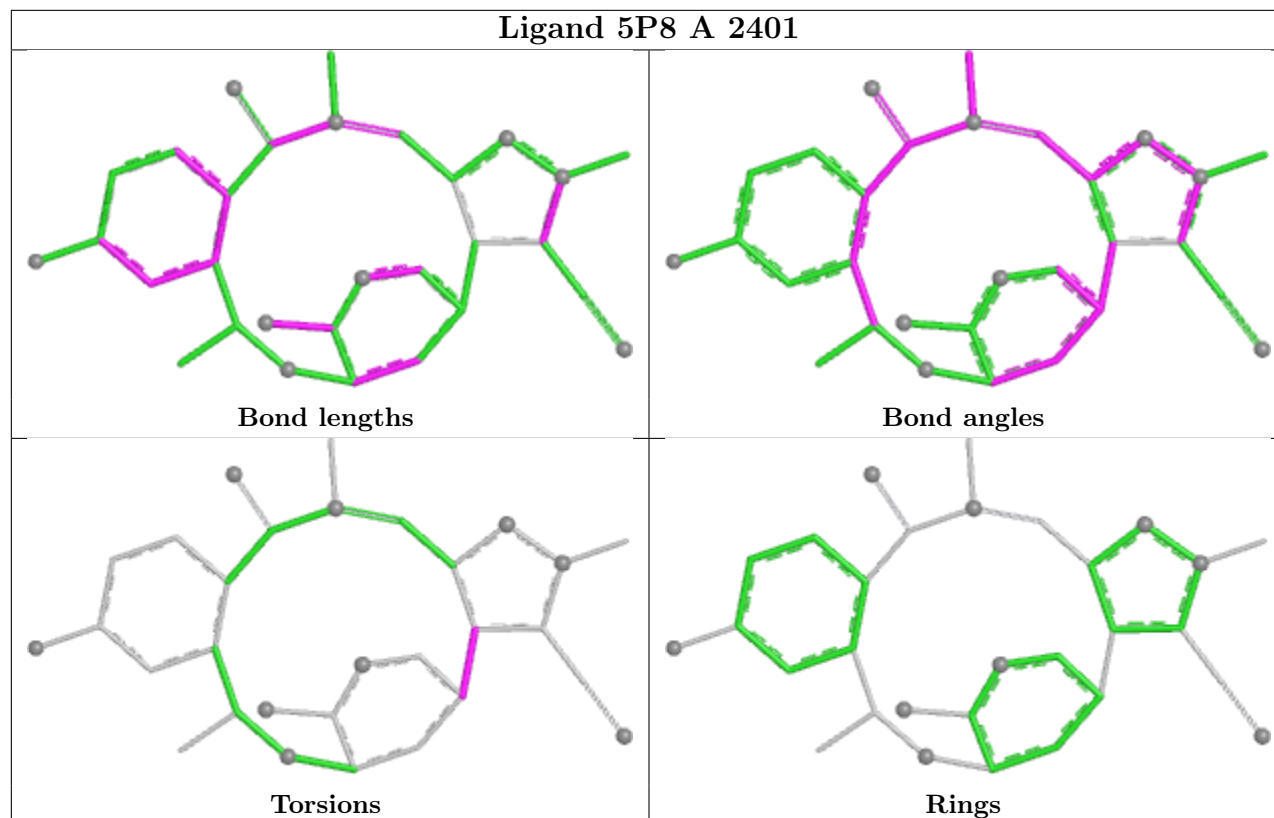
Mol	Chain	Res	Type	Atoms
2	A	2401	5P8	C22-C18-C5-C6
2	A	2401	5P8	C19-C18-C5-C6

There are no ring outliers.

No monomer is involved in short contacts.

The following is a two-dimensional graphical depiction of Mogul quality analysis of bond lengths, bond angles, torsion angles, and ring geometry for all instances of the Ligand of Interest. In addition, ligands with molecular weight > 250 and outliers as shown on the validation Tables will also be included. For torsion angles, if less than 5% of the Mogul distribution of torsion angles is within 10 degrees of the torsion angle in question, then that torsion angle is considered an outlier. Any bond that is central to one or more torsion angles identified as an outlier by Mogul will be highlighted in the graph. For rings, the root-mean-square deviation (RMSD) between the ring in question and similar rings identified by Mogul is calculated over all ring torsion angles. If the average RMSD is greater than 60 degrees and the minimal RMSD between the ring in question and any Mogul-identified rings is also greater than 60 degrees, then that ring is considered an outlier. The outliers are highlighted in purple. The color gray indicates Mogul did not find sufficient

equivalents in the CSD to analyse the geometry.



5.7 Other polymers [i](#)

There are no such residues in this entry.

5.8 Polymer linkage issues [i](#)

There are no chain breaks in this entry.

6 Fit of model and data

6.1 Protein, DNA and RNA chains

In the following table, the column labelled ‘#RSRZ> 2’ contains the number (and percentage) of RSRZ outliers, followed by percent RSRZ outliers for the chain as percentile scores relative to all X-ray entries and entries of similar resolution. The OWAB column contains the minimum, median, 95th percentile and maximum values of the occupancy-weighted average B-factor per residue. The column labelled ‘Q< 0.9’ lists the number of (and percentage) of residues with an average occupancy less than 0.9.

Mol	Chain	Analysed	<RSRZ>	#RSRZ>2	OWAB(Å ²)	Q<0.9
1	A	295/327 (90%)	0.37	27 (9%) 14 14	13, 25, 54, 72	1 (0%)

All (27) RSRZ outliers are listed below:

Mol	Chain	Res	Type	RSRZ
1	A	1126	ALA	5.5
1	A	1100	GLY	5.1
1	A	1401	TYR	5.0
1	A	1124	HIS	4.8
1	A	1288	CYS	4.3
1	A	1286	GLY	3.7
1	A	1125	GLY	3.4
1	A	1279	ARG	3.2
1	A	1127	PHE	3.2
1	A	1165	LEU	3.0
1	A	1144	PRO	2.9
1	A	1278	TYR	2.9
1	A	1093	ASN	2.8
1	A	1097	CYS	2.8
1	A	1099	ALA	2.8
1	A	1301	PHE	2.7
1	A	1135	VAL	2.7
1	A	1123	GLY	2.6
1	A	1287	GLY	2.5
1	A	1277	ILE	2.5
1	A	1101	LYS	2.3
1	A	1300	ALA	2.3
1	A	1219	SER	2.2
1	A	1214	ARG	2.2
1	A	1211	THR	2.2
1	A	1129	GLU	2.0
1	A	1217	GLN	2.0

6.2 Non-standard residues in protein, DNA, RNA chains [i](#)

There are no non-standard protein/DNA/RNA residues in this entry.

6.3 Carbohydrates [i](#)

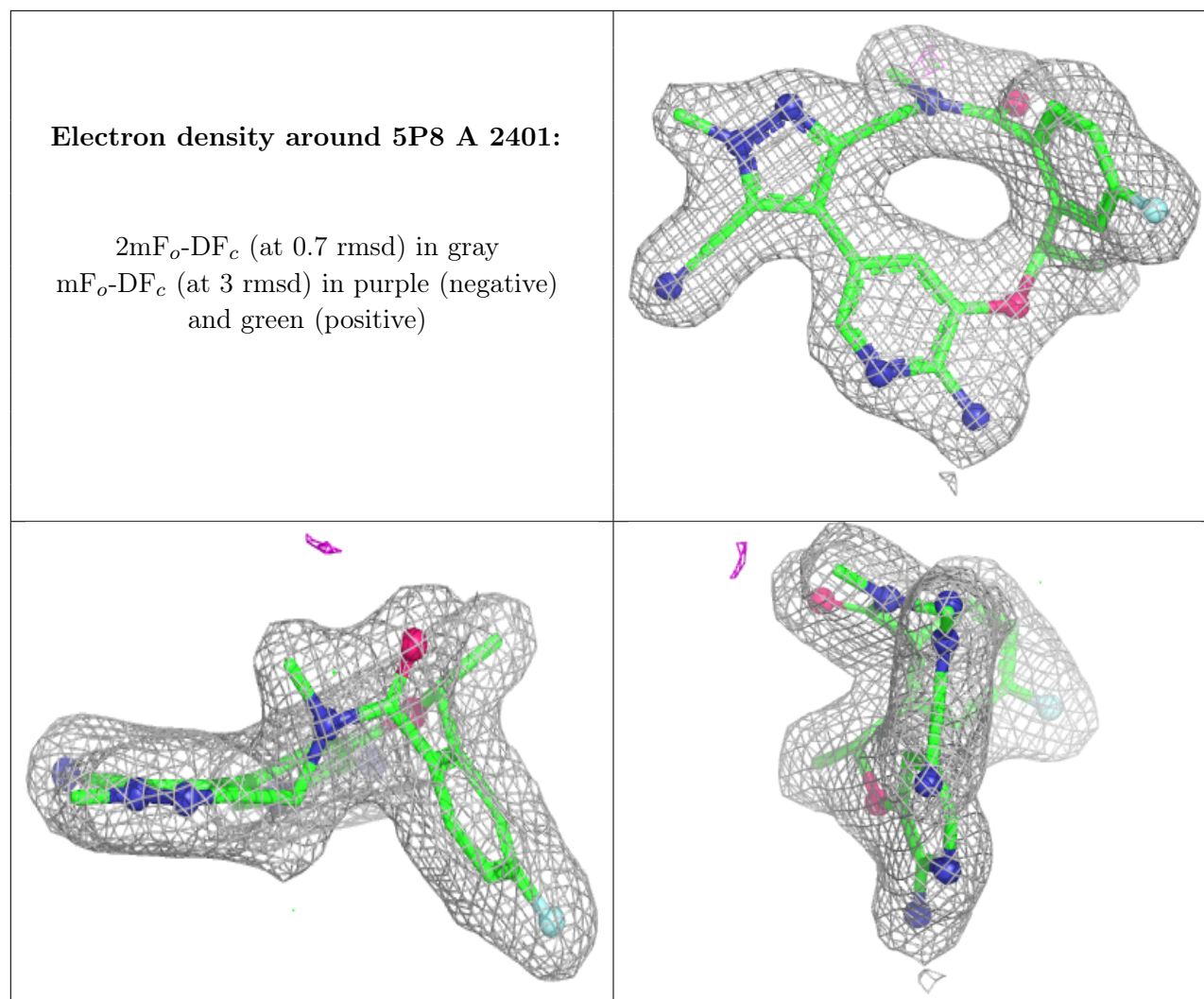
There are no oligosaccharides in this entry.

6.4 Ligands [i](#)

In the following table, the Atoms column lists the number of modelled atoms in the group and the number defined in the chemical component dictionary. The B-factors column lists the minimum, median, 95th percentile and maximum values of B factors of atoms in the group. The column labelled 'Q< 0.9' lists the number of atoms with occupancy less than 0.9.

Mol	Type	Chain	Res	Atoms	RSCC	RSR	B-factors(\AA^2)	Q<0.9
2	5P8	A	2401	30/30	0.94	0.07	16,22,25,26	0

The following is a graphical depiction of the model fit to experimental electron density of all instances of the Ligand of Interest. In addition, ligands with molecular weight > 250 and outliers as shown on the geometry validation Tables will also be included. Each fit is shown from different orientation to approximate a three-dimensional view.



6.5 Other polymers ⓘ

There are no such residues in this entry.